

2304 GALVANIC ISOLATOR

APPLICATIONS

The 2304 is a Galvanic Isolator which is a zone-powered, two-channel interface for use in conventional fire detection systems for protection within hazardous areas.



FEATURES

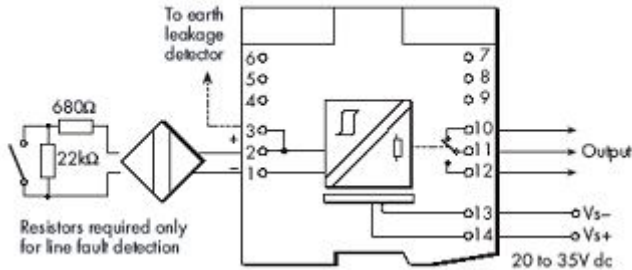
- Simple installation onto standard DIN raiting
- Simplified installation and maintenance using plug-in connectors.
- Input circuit protected against reverse polarity.

OPERATION

The 2304 Galvanic Isolator provides electrical isolation via an isolating transformer, this negates the need for a separate earth connection. This isolation technique limits the power to the devices within the hazardous area. The unit has reverse input polarity protection, while 'non-fail' earth fault detection on either line can be provided by connecting an earth leakage detector to terminals 3 or 6.

Safety is improved since there is no risk of the earth connection being lost.

APPROVALS : Approved and CE marked for all applicable directives



TERMINAL	FUNCTION
1	Output -ve (Channel1)
2	Output +ve (Channel1)
3	Earth Leakage Detection (Channel 1)
4	Output -ve (Channel 2)
5	Output +ve (Channel 2)
6	Earth leakage detection (Channel 2)
8	Input -ve (Channel 2)
9	Input +ve (Channel 2)
11	Input -ve (Channel 1)
12	Input +ve (Channel 1)

SPECIFICATION

Order Code	2304
Maximum voltage of Zener diode when fuse blows	28V
Minimum value of terminating resistor	300Ω
Maximum short-circuit current	93mA
Number of channels	2
Current Range	1 to 40mA
Response Time to step input	Settles to within 500uA of final value within 30ms
Maximum Output Voltage in hazardous area	28V (from 300Ω)
Transfer Accuracy at 20°C	Better than 400uA
Temperature Drift	<10uA/°C (-20°C to 60°C)
Loop Supply Voltage	6 to 35V dc
Operating Temperature Range	-20°C to +60°C (continuous working)
Weight (g)	110
Dimensions	110 H x 104 W x 16 D
Maximum Humidity	95%RH – Non Condensing (40°C)